

SIMPLE
VILAMOURA



Sky Villa

Planta Parcela



0 1 2m

Blue Villa - 16

Sky Villa - 17

White Villa - 18

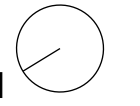
Sand Villa - 19

Yellow Villa - 20

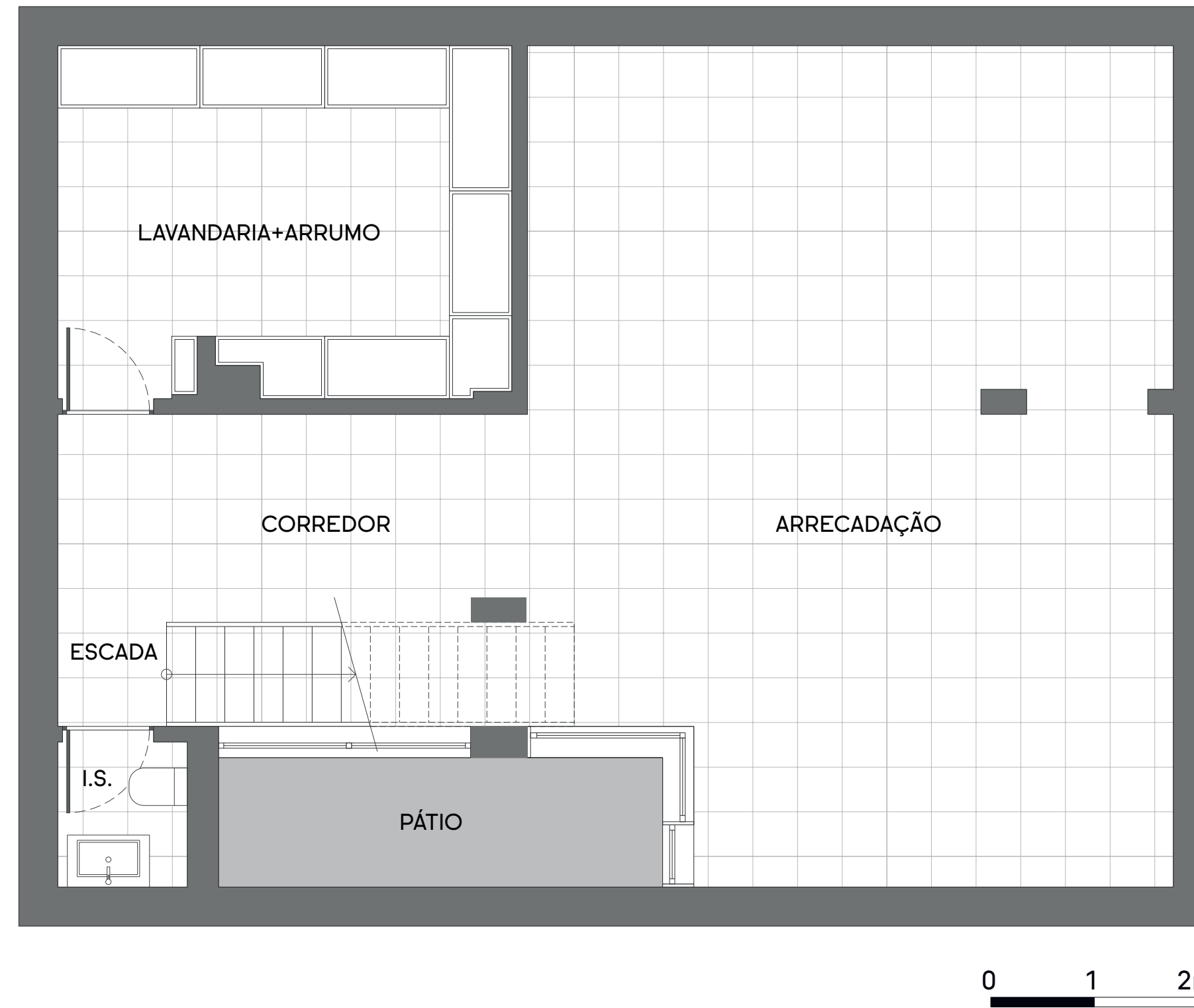
Rua das Cássias

Sky Villa

Planta Piso -1

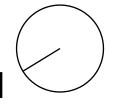


Arrecadação	47,71 m ²
Lavandaria+arrumo	14,40 m ²
Pátio	12,25 m ²
I.S.	1,74 m ²
Corredor	9,94 m ²
Escadas	3,46 m ²

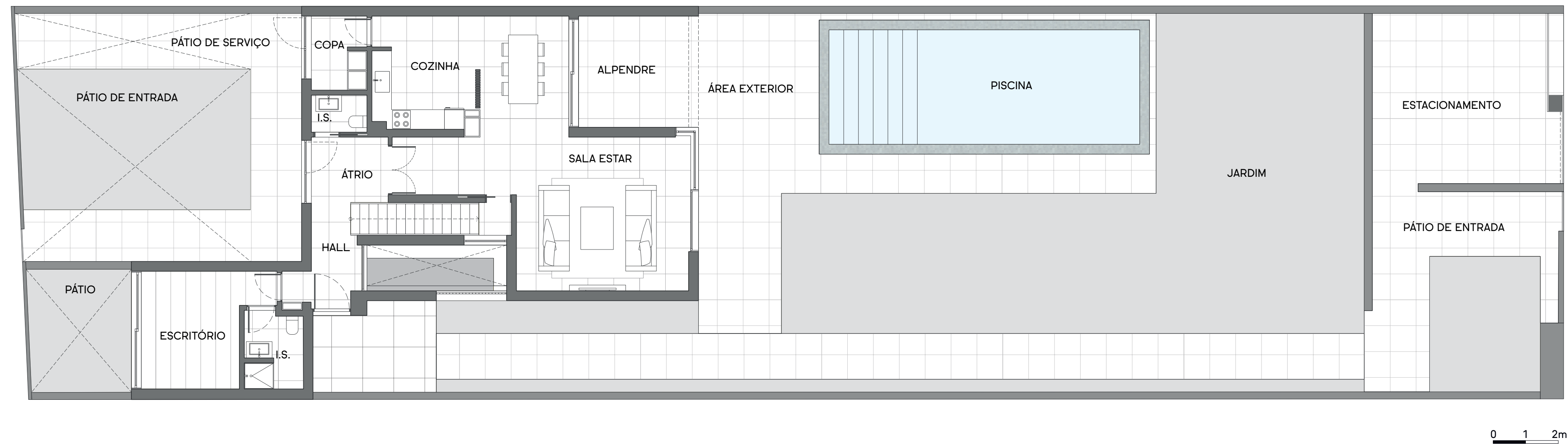


Sky Villa

Planta Terreno Piso 0

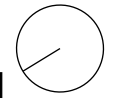


Área bruta de construção	281 m ²
Área do terreno	561 m ²
Área da piscina	33,25 m ²
Área de estacionamento	34 m ²



Sky Villa

Planta Piso 0

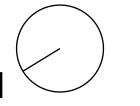


Sala de Estar	31,64 m ²
Cozinha	9,65 m ²
Copa	3,85 m ²
Alpendre	11,27 m ²
I.S.	4,20 m ²
Átrio	5,84 m ²
Hall	3,86 m ²
Escritório	12 m ²
I.S.	4,20 m ²

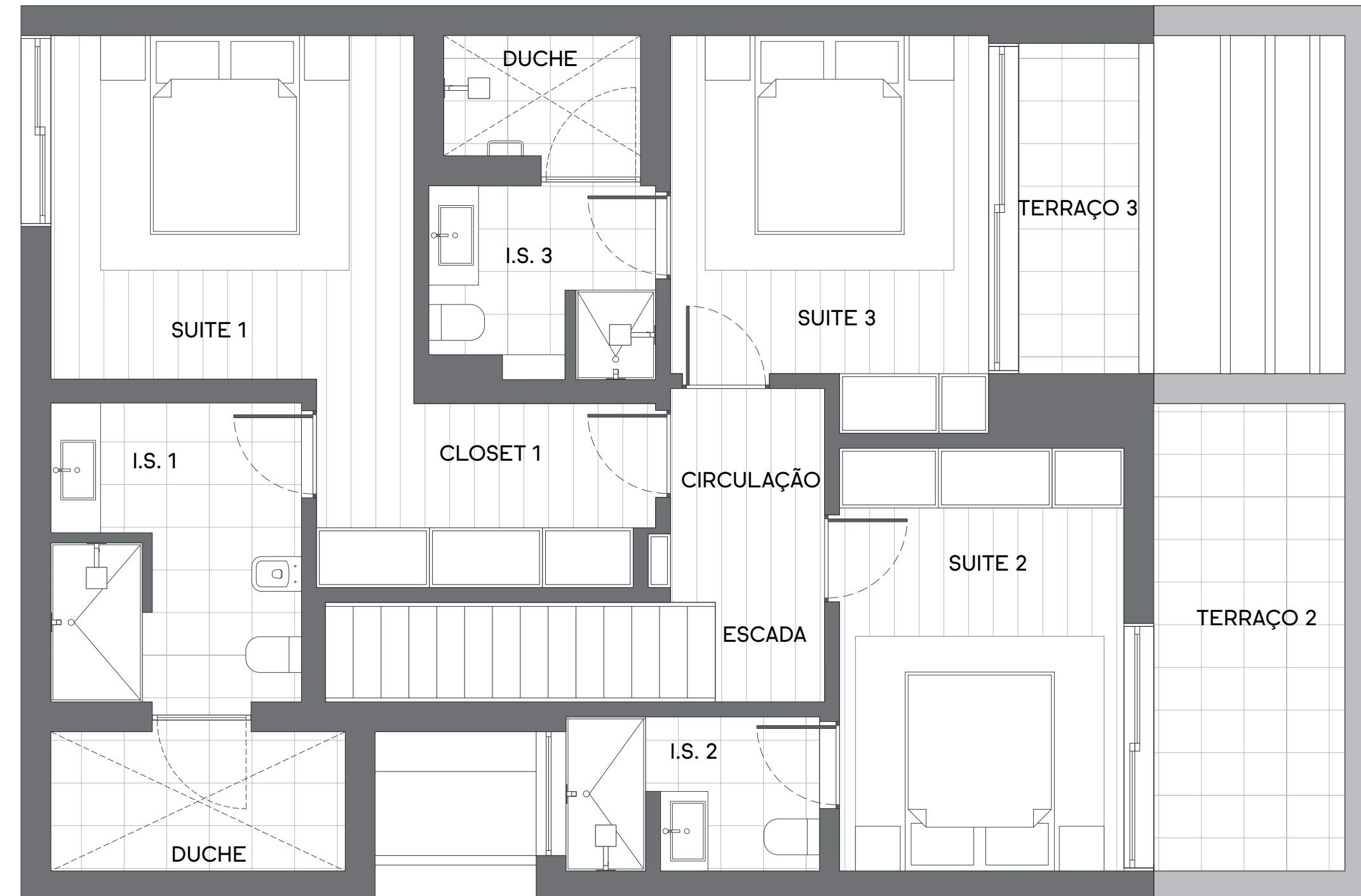


Sky Villa

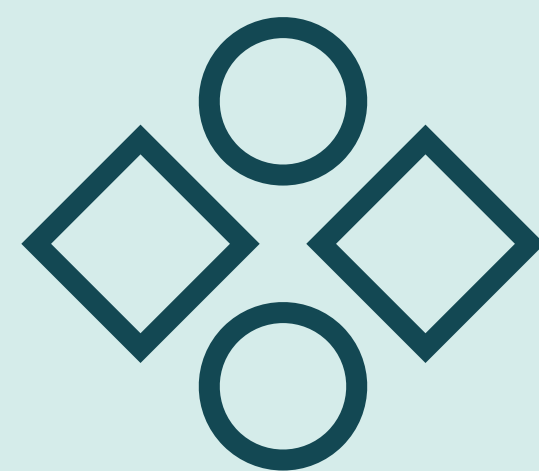
Planta Piso 1



Suite 1	12,63 m ²
Closet 1	6,54 m ²
I.S. e duche 1	11,54 m ²
Suite 2	12,16 m ²
I.S. 2	3,95 m ²
Terraço 2	7,07 m ²
Suite 3	10,88 m ²
I.S. e duche 3	6,85 m ²
Terraço 3	4,62 m ²
Circulação	3,33 m ²
Escada	5,02 m ²



0 1 2m



SIMPLE

VILAMOURA