

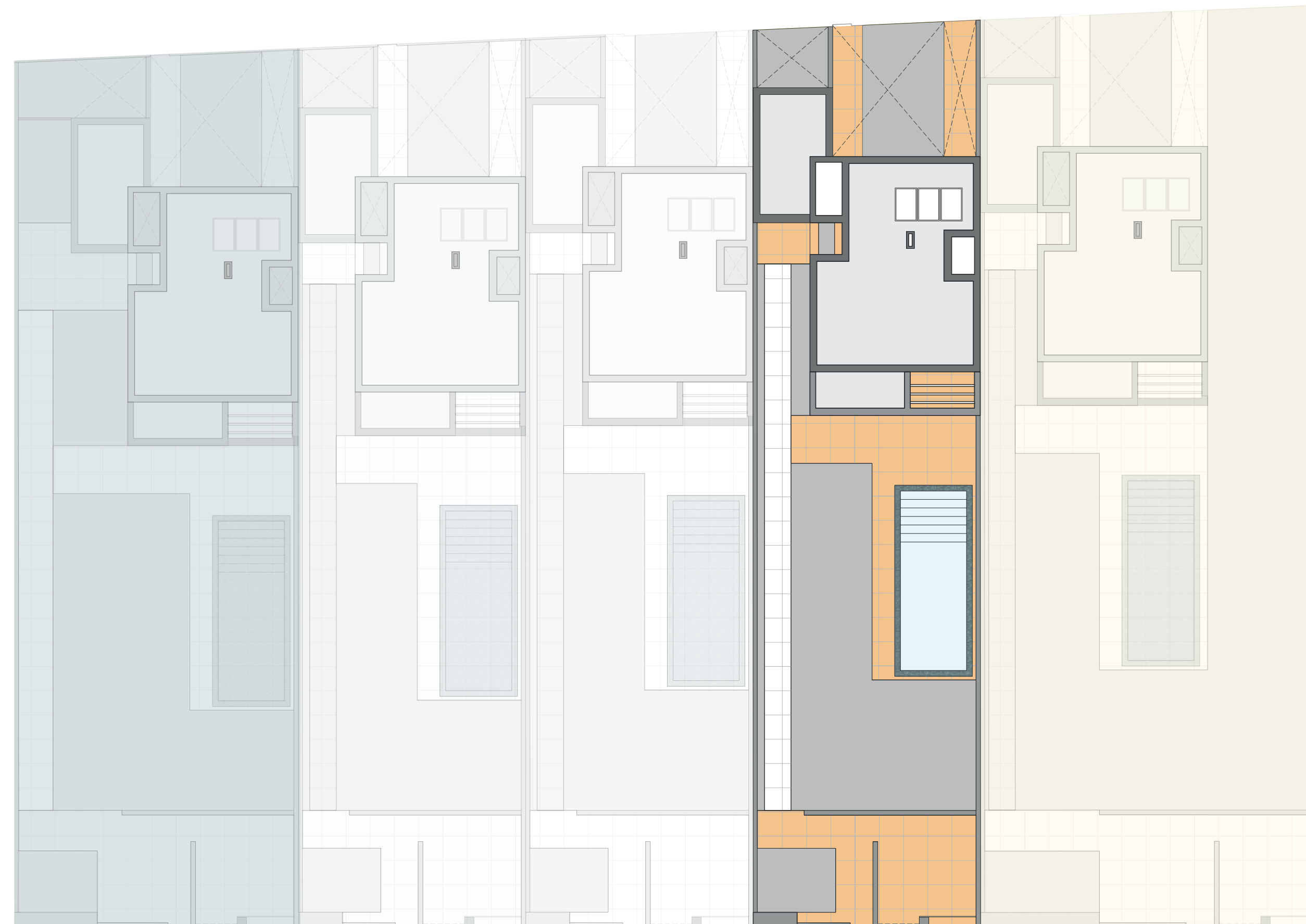


**SIMPLE**  
VILAMOURA



# Sand Villa

## Planta Parcela



Blue Villa - 16

Sky Villa - 17

White Villa - 18

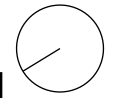
Sand Villa - 19

Yellow Villa - 20

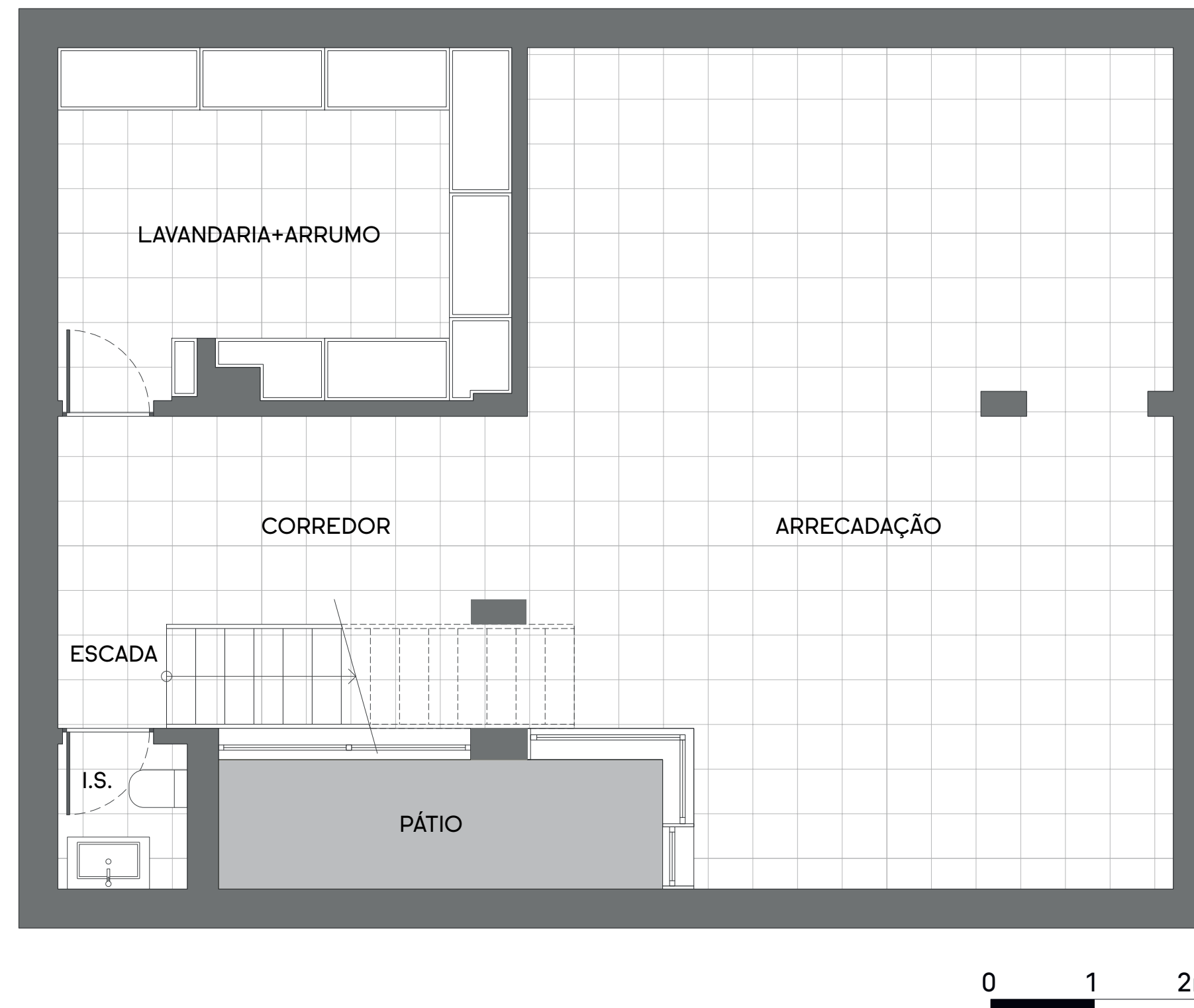
Rua das Cássias

# Sand Villa

## Planta Piso -1

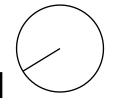


Arrecadação	47,71 m <sup>2</sup>
Lavandaria+arrumo	14,40 m <sup>2</sup>
Pátio	12,25 m <sup>2</sup>
I.S.	1,74 m <sup>2</sup>
Corredor	9,94 m <sup>2</sup>
Escadas	3,46 m <sup>2</sup>

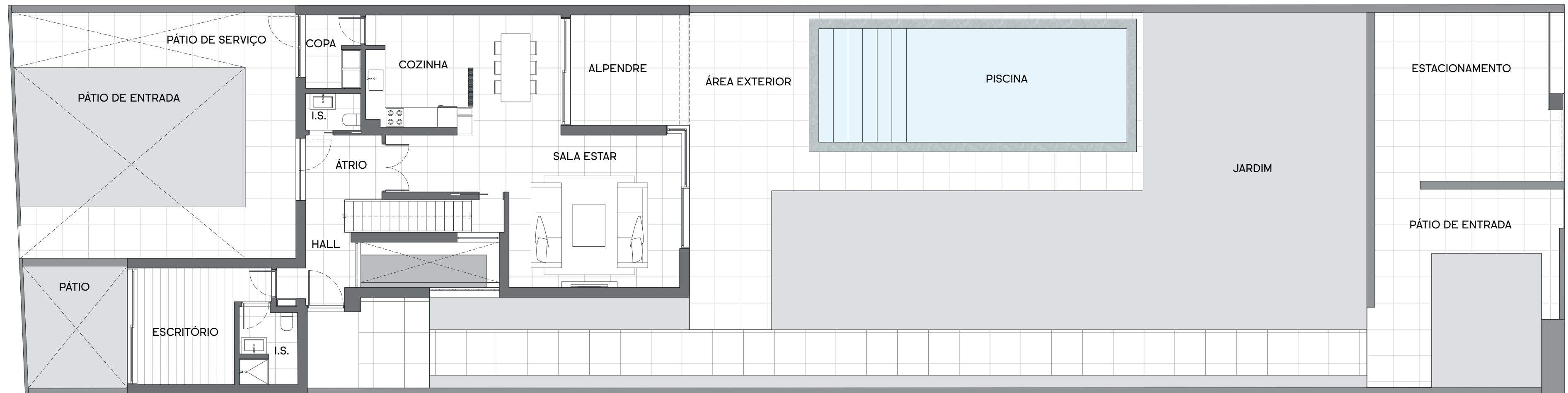


# Sand Villa

## Planta Terreno Piso 0



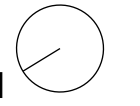
Área bruta de construção	281 m <sup>2</sup>
Área do terreno	573 m <sup>2</sup>
Área da piscina	33,25 m <sup>2</sup>
Área de estacionamento	34 m <sup>2</sup>



0 1 2m

# Sand Villa

## Planta Piso 0

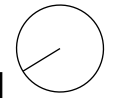


Sala de Estar	31,64 m <sup>2</sup>
Cozinha	9,65 m <sup>2</sup>
Copa	3,85 m <sup>2</sup>
Alpendre	11,27 m <sup>2</sup>
I.S.	4,20 m <sup>2</sup>
Átrio	5,84 m <sup>2</sup>
Hall	3,86 m <sup>2</sup>
Escritório	12 m <sup>2</sup>
I.S.	4,20 m <sup>2</sup>

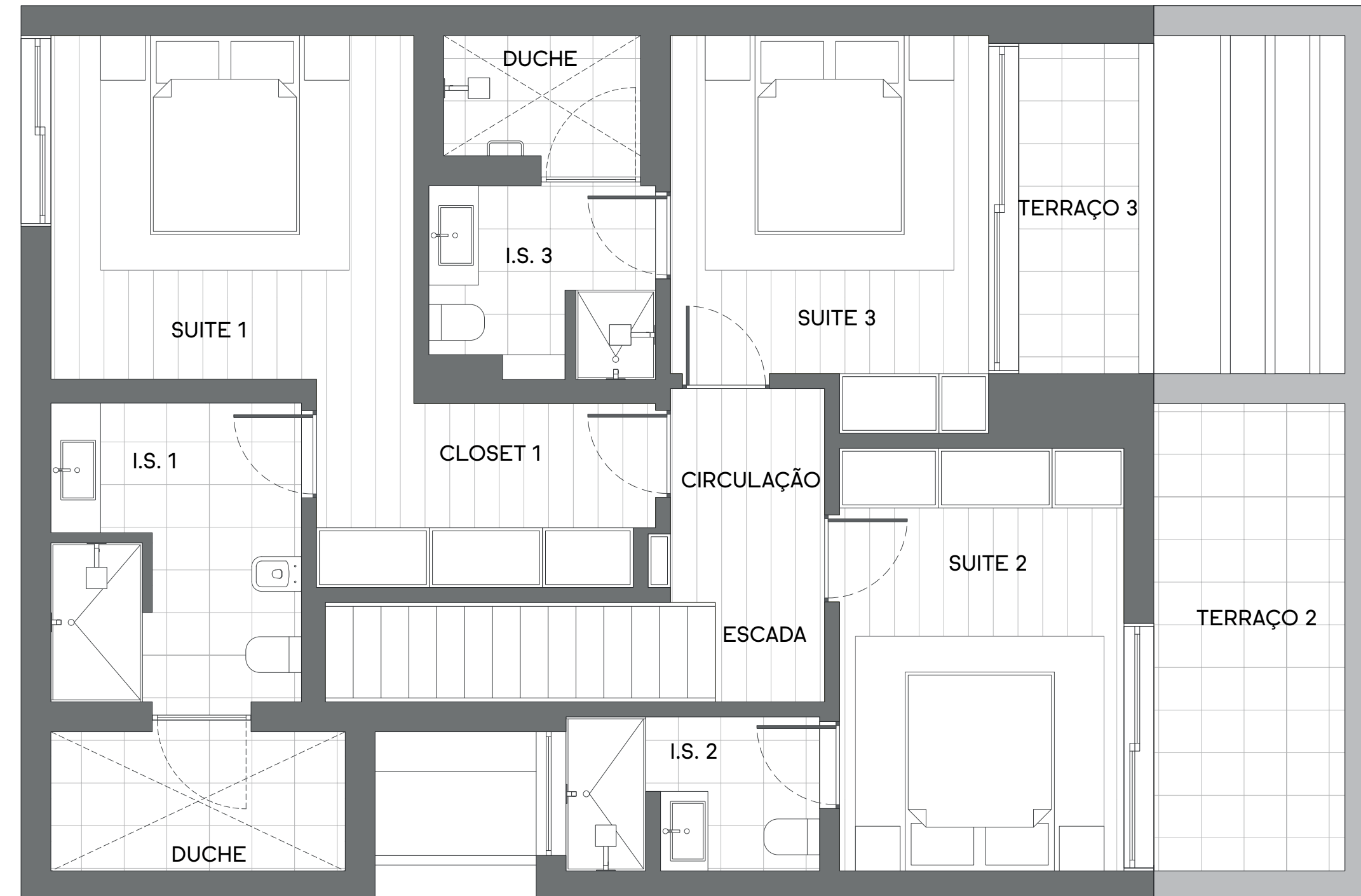


# Sand Villa

## Planta Piso 1



Suite 1	12,63 m <sup>2</sup>
Closet 1	6,54 m <sup>2</sup>
I.S. e duche 1	11,54 m <sup>2</sup>
Suite 2	12,16 m <sup>2</sup>
I.S. 2	3,95 m <sup>2</sup>
Terraço 2	7,07 m <sup>2</sup>
Suite 3	10,88 m <sup>2</sup>
I.S. e duche 3	6,85 m <sup>2</sup>
Terraço 3	4,62 m <sup>2</sup>
Circulação	3,33 m <sup>2</sup>
Escada	5,02 m <sup>2</sup>



0 1 2m



# SIMPLE

VILAMOURA